



# UniFi

## Enterprise WiFi System

Models: UAP, UAP-LR, UAP-Outdoor, UAP-Mini

**Unlimited Indoor/Outdoor AP Scalability in a Unified Management System**

**150 - 300 Mbps 802.11b/g/n WiFi Technology**

**Intuitive UniFi Controller Software**

**Hotspot Management - Customization and Built-In Billing Options**

# Overview

## Scalable and Unified Enterprise WiFi Management

The UniFi Enterprise WiFi System is a scalable enterprise access point solution designed to be easily deployed and managed. All UniFi Access Point (AP) models (UAP-Mini, UAP, UAP-LR and UAP-Outdoor) have a sleek design and can be easily mounted to a ceiling tile or wall using the included mounting hardware. They are powered using the included Power over Ethernet (PoE) adapter, which provides power and data using a single cable.

The UniFi Enterprise WiFi System includes the UniFi Controller software. The software installs on any PC or Mac within the network and is easily accessible through any standard web browser. Using the UniFi Controller software, an Enterprise WiFi network can be instantly configured and administered without any special training. Real-time status, automatic UAP device detection, map loading, and advanced security options are all seamlessly integrated.

### Features

**Design** Aesthetic industrial design with unique LED provisioning ring which provides an administrator location tracking and alerts for each device.

**Powerful Hardware** UniFi AP devices feature the latest in WiFi 802.11n technology (b/g/n supported)—capable of 150 Mbps speeds (UAP-Mini) and 300 Mbps speeds (UAP, UAP-LR and UAP-Outdoor) with ranges from 300 ft. (UAP-Mini), 400 ft. (UAP) and 600 ft. (UAP-LR and UAP-Outdoor).

**Intuitive UniFi Controller Software** Install, configure, and manage all of your UniFi AP devices with the intuitive and easy-to-learn UniFi Controller software User Interface (no special training needed).

**Expandable** Unlimited scalability. Build wireless networks as small or big as needed. Start with one (or upgrade to a 3-pack) and expand to thousands while maintaining a single unified management system.

 [www.ubnt.com/unifi](http://www.ubnt.com/unifi)



### UniFi AP-Mini (UAP-Mini)

802.11n UniFi AP, our most affordable unit. Capable of 150+Mbps speeds and links of up to 300 ft.

UAP-Mini available in single-pack

Included:

- Wall and Ceiling Mount Adapter Kit
- Power Over Ethernet Adapter
- UniFi Controller Software Installation CD



### UniFi AP (UAP)

802.11n MIMO UniFi AP. Capable of 300+Mbps speeds and links of up to 400 ft.

UAP available in single-pack and 3-pack.

Included:

- Wall and Ceiling Mount Adapter Kit
- Power Over Ethernet Adapter
- UniFi Controller Software Installation CD

# Overview

## Features

**Easy Mounting** Sleek wall-mountable and ceiling tile mountable design (all accessories included).

**Power over Ethernet (PoE)** Includes Power over Ethernet (PoE) functionality which allows both power and data to be carried over a single Ethernet cable to the device.

**Wireless Uplinks** One wired UniFi AP uplink supports 4 wireless downlinks allowing wireless adoption of devices and real-time changes to network topology.

**L3 Manageability** With L3 Manageability, the UniFi Controller software can be run in a different subnet to the UniFi APs it manages, allowing "no-touch" AP provisioning.

**Hotspot Management** All UniFi APs include Hotspot functionality including:

- Built-in support for billing integration using major credit cards via PayPal™.
- Built-in support for voucher-based authentication.
- Built in Hotspot Manager for voucher creation, guest management and payment refund.
- Full customization of Hotspot portal pages.

**Rate Limiting** Take advantage of UniFi's rate limiting for your Guest Portal and Hotspot package offerings. Apply different bandwidth rates (download/upload), limit total data usage and limit duration of use.

**Google Maps™ Integration** Upload your own custom-created coverage maps or configure your map using the built-in Google Maps API.

**Email Alerts** Enable delivery of custom email alerts to your inbox to report on any status changes in the UniFi Controller software.



### UniFi AP-Long Range (UAP-LR)

Link 50% further than the base model UAP with UAP-LR. 802.11n MIMO, 300+Mbps speeds, 600 ft range.

UAP-LR available in single-pack and 3-pack.

Included:

- Wall and Ceiling Mount Adapter Kit
- Power Over Ethernet Adapter
- UniFi Controller Software Installation CD



### UniFi AP-Outdoor (UAP-Outdoor)

Take UniFi outdoors and link 50% further than the base model UAP with UAP-Outdoor. Includes 2 external omni antennas and secondary Ethernet port. 802.11n MIMO, 300+Mbps speeds, 600 ft range.

UAP-Outdoor available in single-pack.

Included:

- Wall and Ceiling Mount Adapter Kit
- Power Over Ethernet Adapter
- UniFi Controller Software Installation CD

 [www.ubnt.com/unifi](http://www.ubnt.com/unifi)

# UniFi Controller Software

## Packed with Features

After the UniFi Controller software is installed on a Mac or PC, the UniFi Controller can be accessed through any device using a web browser. The UniFi Controller allows the operator to instantly provision thousands of UniFi APs, map out networks, quickly manage system traffic, and further provision individual UniFi AP devices.

## Users and Guests

Keep track and control access of specific users/guests connected to your network(s).

## Remote Firmware Upgrade

Save time and effort by remotely upgrading device firmware.

## Guest Portal Support

Easy customization and advanced options for Guest Portals including authentication, Hotspot setup options and the ability to run as an External Portal Server.

## Events and Alerts

UniFi makes it easy to view and set up email delivery of alerts and recent events on your network(s).

## One Unified Network

Option to create one large wireless network across multiple APs that lets users seamlessly roam.

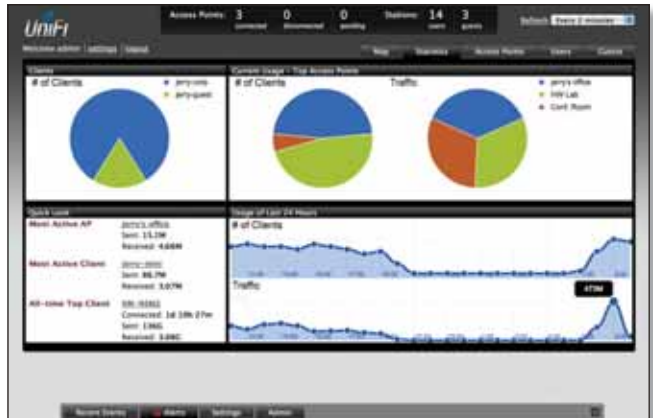
## Save money. Save time.

Unlike traditional enterprise WiFi systems utilizing a hardware WiFi Switch, UniFi uses a virtual client/server application that requires zero cost and no additional hardware.



## Maps

Upload map images of your location(s) for a visual representation of your wireless network.



## Statistics

UniFi organizes and visualizes your network(s) traffic in clear and easy-to-read graphs.



## Access Points (APs)

Easily install, configure, and manage all access points from one location.

# Extend Your Coverage

With the UniFi Controller software running in a NOC or in the cloud, administrators can extend and centrally manage wide areas of indoor and outdoor coverage using any combination of UniFi AP devices.

Below are some examples of how UniFi APs can be deployed.



**Extend Wirelessly** Take advantage of wireless downlinking. One wired UniFi AP uplink supports 4 wireless downlinks allowing wireless adoption of devices in their default state and real-time changes to network topology.

**Manage Hotspots and Control Billing** Use Hotspot to customize portal login pages and bill customers using major credit cards via PayPal™. Or, set up a voucher-based authentication system using Hotspot Manager for voucher creation, user administration, guest management and payment refunds.

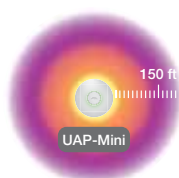
# Specifications

UniFi AP-Mini (UAP-Mini) Specifications	
Dimensions	13.5 x 13.5 x 2.6 cm (L x W x H)
Weight	113 g (134 g with mounting kits)
Ports	Ethernet (Auto MDX, autosensing 10/100 Mbps)
Buttons	Reset
Antennas	1 Integrated
Wi-Fi Standards	802.11 b/g/n*
Power Method	Passive Power over Ethernet (12-24V)
Power Supply	24V 0.5A PoE Adapter included
Maximum Power Consumption	3W
Max TX Power	18 dBm
BSSID	Up to four per radio
Power Save	Supported
Wireless Security	WEP, WPA-PSK, WPA-TKIP, WPA2 AES, 802.11i
Certifications	CE, FCC, IC
Mounting	Wall/Ceiling (Kits included)
Operating Temperature	-10 to 70°C (14 to 158° F)
Operating Humidity	5 - 80% Condensing

Advanced Traffic Management	
VLAN	802.1Q
Advanced QoS	Per-user rate limiting
Guest traffic isolation	Supported
WMM	Voice, video, best effort, and background
Concurrent Clients	100+

Supported Data Rates (Mbps)	
Frequency (MHz)	
802.11n	MCS0 - MCS7 (6.5 Mbps to 150 Mbps), HT 20/40
802.11b	1, 2, 5.5, 11
802.11g	6, 9, 12, 18, 24, 36, 48, 54

\* 2.4GHz



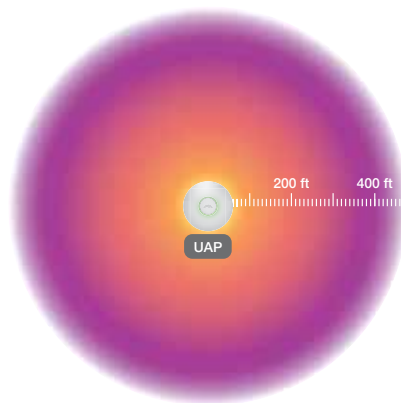
# Specifications

UniFi AP (UAP) Specifications	
Dimensions	20 x 20 x 3.65 cm
Weight	290 g (430 g with mounting kits)
Ports	Ethernet (Auto MDX, autosensing 10/100 Mbps)
Buttons	Reset
Antennas	2 Integrated (supports 2x2 MIMO with spatial diversity)
Wi-Fi Standards	802.11 b/g/n*
Power Method	Passive Power over Ethernet (12-24V)
Power Supply	24V 0.5A PoE Adapter included
Maximum Power Consumption	4W
Max TX Power	20 dBm
BSSID	Up to four per radio
Power Save	Supported
Wireless Security	WEP, WPA-PSK, WPA-TKIP, WPA2 AES, 802.11i
Certifications	CE, FCC, IC
Mounting	Wall/Ceiling (Kits included)
Operating Temperature	-10 to 70°C (14 to 158° F)
Operating Humidity	5 - 80% Condensing

Advanced Traffic Management	
VLAN	802.1Q
Advanced QoS	WLAN prioritization
Guest traffic isolation	Supported
WMM	Voice, video, best effort, and background
Concurrent Clients	100+

Supported Data Rates (Mbps)	
Frequency (MHz)	
802.11n	MCS0 - MCS15 (6.5 Mbps to 300 Mbps), HT 20/40
802.11b	1, 2, 5.5, 11
802.11g	6, 9, 12, 18, 24, 36, 48, 54

\* 2.4GHz



 [www.ubnt.com/unifi](http://www.ubnt.com/unifi)

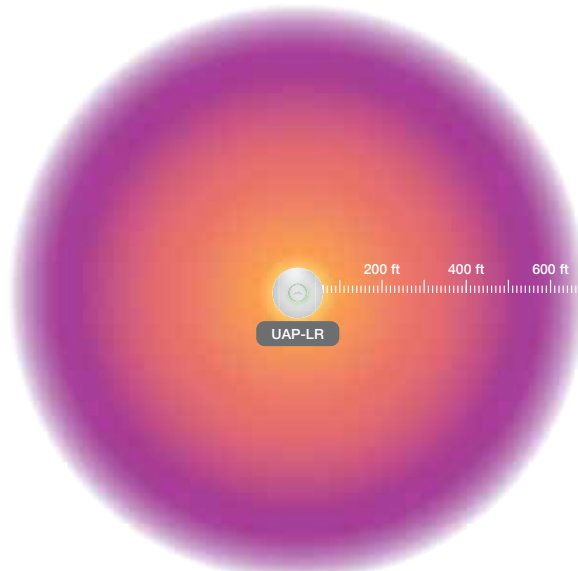
# Specifications

UniFi AP Long-Range (UAP-LR) Specifications	
Dimensions	20 x 20 x 3.65 cm
Weight	290 g (430 g with mounting kits)
Ports	Ethernet (Auto MDX, autosensing 10/100 Mbps)
Buttons	Reset
Antennas	2 Integrated (supports 2x2 MIMO with spatial diversity)
Wi-Fi Standards	802.11 b/g/n*
Power Method	Passive Power over Ethernet (12-24V)
Power Supply	24V 0.5A PoE Adapter included
Maximum Power Consumption	6W
Max TX Power	27 dBm
BSSID	Up to four per radio
Power Save	Supported
Wireless Security	WEP, WPA-PSK, WPA-TKIP, WPA2 AES, 802.11i
Certifications	CE, FCC, IC
Mounting	Wall/Ceiling (Kits included)
Operating Temperature	-10 to 70°C (14 to 158° F)
Operating Humidity	5 - 80% Condensing

Advanced Traffic Management	
VLAN	802.1Q
Advanced QoS	WLAN prioritization
Guest traffic isolation	Supported
WMM	Voice, video, best effort, and background
Concurrent Clients	100+

Supported Data Rates (Mbps)	
Frequency (MHz)	
802.11n	MCS0 - MCS15 (6.5 Mbps to 300 Mbps), HT 20/40
802.11b	1, 2, 5.5, 11
802.11g	6, 9, 12, 18, 24, 36, 48, 54

\* 2.4GHz





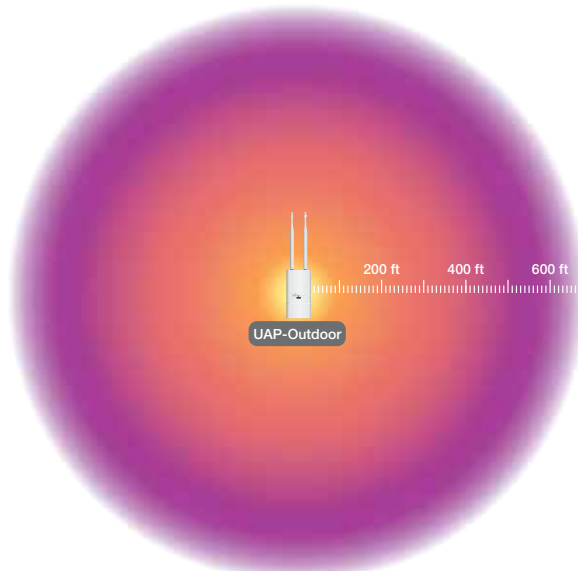
# Specifications

UniFi AP-Outdoor (UAP-Outdoor) Specifications	
Dimensions	17 x 8 x 3 cm
Weight	0.5 kg without antennas 0.54 kg with antennas (2)
Ports	Ethernet (2) (Auto MDX, autosensing 10/100 Mbps)
Buttons	Reset
Antennas	(2) External 6 dBi omni antenna included 191 mm (Length), 13mm (Diameter)
Wi-Fi Standards	802.11 b/g/n*
Power Method	Passive Power over Ethernet (12-24V)
Power Supply	24V 1A PoE Adapter included
Maximum Power Consumption	4.6 Watts
Max TX Power	27 dBm
BSSID	Up to four per radio
Power Save	Supported
Wireless Security	WEP, WPA-PSK, WPA-TKIP, WPA2 AES, 802.11i
Certifications	CE, FCC, IC
Mounting	Wall/Ceiling (Kits included)
Operating Temperature	-30 to 75°C (-22 to 167° F)
Operating Humidity	5 - 95% Condensing

Advanced Traffic Management	
VLAN	802.1Q
Advanced QoS	WLAN prioritization
Guest traffic isolation	Supported
WMM	Voice, video, best effort, and background
Concurrent Clients	100+

Supported Data Rates (Mbps)	
Frequency (MHz)	
802.11n	MCS0 - MCS15 (6.5 Mbps to 300 Mbps), HT 20/40
802.11b	1, 2, 5.5, 11
802.11g	6, 9, 12, 18, 24, 36, 48, 54

\* 2.4GHz



 [www.ubnt.com/unifi](http://www.ubnt.com/unifi)

# TOUGH Cable

OUTDOOR CARRIER CLASS SHIELDED

Protect your networks from the most brutal environments with Ubiquiti's industrial-grade shielded Ethernet cable, TOUGH Cable.

**Increase Performance** Dramatically improve your Ethernet link states, speeds, and overall performance with Ubiquiti TOUGH Cables.

**Extreme Weatherproof** TOUGH Cables have been built to perform even in the harshest weather and environments.

**ESD Damage Protection** Protect your networks from devastating electrostatic discharge (ESD) attacks.

**Extended Cable Support** TOUGH Cables have been developed to have increased power handling performance for extended cable run lengths.

## Bulletproof your networks

TOUGH Cable is currently available in two versions: Level 1 Shielding Protection and Level 2 Shielding Protection.

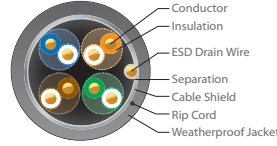
**Level 1** is a Category 5e outdoor carrier-class shielded cable.

**Level 2** is a Category 5e outdoor carrier-class shielded cable that features an Anti-Crosstalk Divider, additional shielding and is rated to provide optimal performance on Gigabit Ethernet networks.

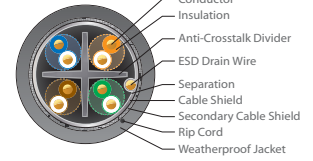
### Additional Information:

- 24 AWG copper conductor pairs
- 26 AWG integrated ESD drain wire to prevent ESD attacks & damage
- PE outdoor-rated weatherproof jacket
- Multi-layered shielding
- Available in 1000 ft (304.8 m) length

### LEVEL 1 SHIELDING PROTECTION



### LEVEL 2 SHIELDING PROTECTION

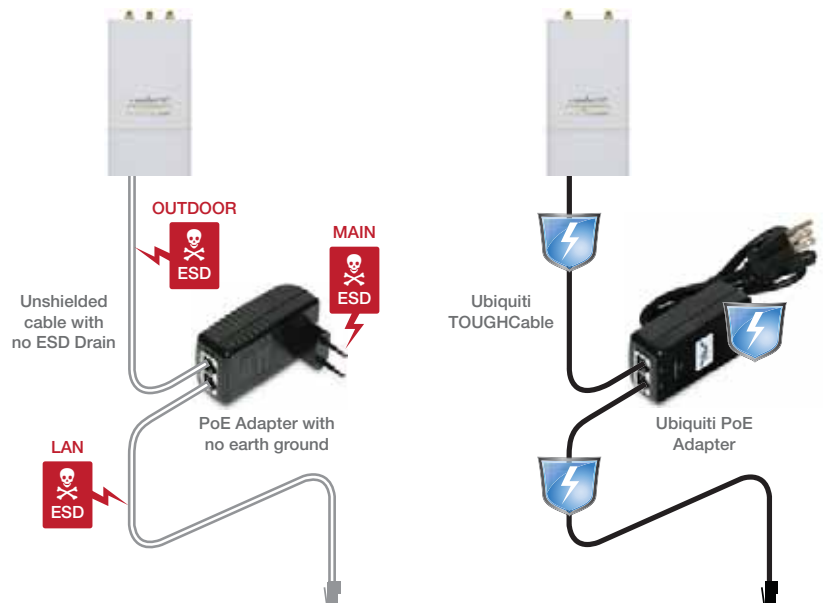


## TOUGH Cable Connectors

Specifically designed for use with Ubiquiti TOUGH Cables and available in 100 pc. bags, TOUGH Cable Connectors protect against ESD attacks and Ethernet hardware damage while allowing rapid field deployment without soldering.

ESD attacks are overwhelmingly the leading cause for device failures. The diagram below illustrates the areas vulnerable to ESD Attacks in a defenseless network.

Use a grounded Ubiquiti Power over Ethernet (PoE) adapter along with Ubiquiti TOUGH Cable and TOUGH Cable Connectors to effectively protect against ESD attacks.



[www.ubnt.com/toughcable](http://www.ubnt.com/toughcable)

TERMS OF USE: The Ubiquiti radio device must be professionally installed. Shielded Ethernet cable and earth grounding must be used as conditions of product warranty. It is the installers responsibility to follow local country regulations including operation within legal frequency channels, output power, and Dynamic Frequency Selection (DFS) requirements.

For further information, please visit [www.ubnt.com](http://www.ubnt.com).

All specifications in this document are subject to change without notice.

© 2011 Ubiquiti Networks, Inc. All rights reserved

MA090911

 [www.ubnt.com](http://www.ubnt.com)